

Assessing Biodiversity from Space: Physiological Diversity Across Spatial Scales and Optical Sensors

Isabelle Helfenstein, Fabian D. Schneider, Michael E. Schaepman, Felix Morsdorf



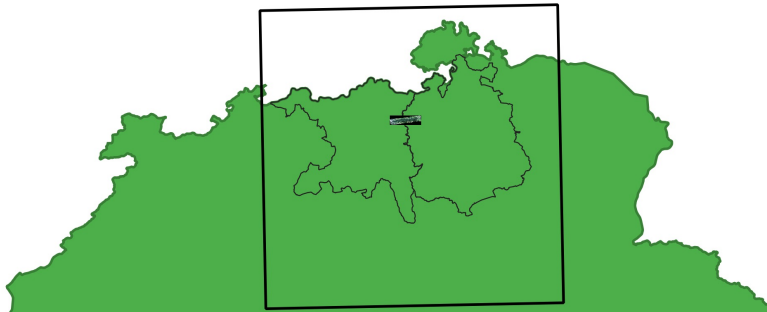
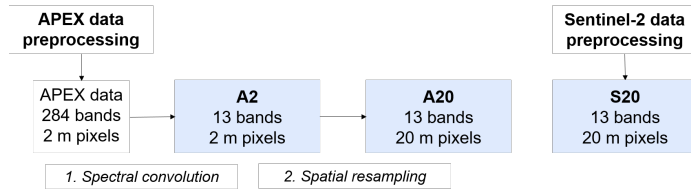
University of Zurich^{UZH}

RSL
measurements | products | policy

Isabelle Helfenstein
isabelle.helfenstein@geo.uzh.ch

From Airborne imaging spectroscopy to satellite data: Transfer methods to map physiological diversity

- Satellites enable repeated measurements on large extents
- Differentiating between scaling and sensor-related influences



Physiological traits to derive functional richness and divergence: **chlorophyll**, **carotenoid** and **water** content.

